

AUREUS

THE BRUNSWICK

FACADE 1

3 BEDROOM

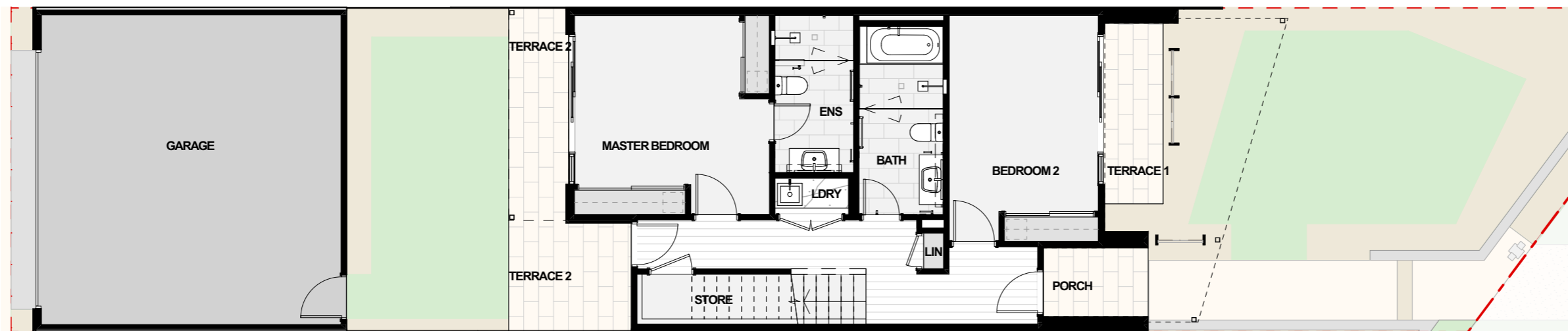
2 CAR SPACE

NSA	
FIRST FLOOR	70
GROUND FLOOR	65
<hr/>	
	135 m ²

GFA	
BALCONY	18
FIRST FLOOR	70
GARAGE	40
GROUND FLOOR	65
PORCH	3
TERRACE 1	4
TERRACE 2	10
<hr/>	
	210 m ²



LEVEL 1



GROUND FLOOR

Disclaimer: The content contained in these architectural plans (Plans) remains at all times the intellectual property of Intrapac Property Pty Ltd (Company). The Plans are provided strictly on the basis of, and subject to, these terms. By taking a copy of the Plans, you acknowledge and represent to the Company that you have read, understood and accepted these terms and agree to keep the Plans confidential. The Plans are current as at the date of issue, and are approximate and for illustrative purposes only. Any furnishings illustrated are not included. To the extent permitted by law, no guarantees, warranties, or representations as to the accuracy and completeness of the Plans are made. The Company may substitute items with equivalent items, use substitute products or modify the Plans (including any specifications or dimensions represented on the Plans) due to building and design requirements. To the extent permitted by law, the Company and its directors, officers, employees, advisers and agents expressly disclaim all liability which may be based on any information, statement or opinion contained in or omitted from the Plans. You must not rely upon such information in any way. The Company accepts no liability for any action taken or not taken by any party in reliance on the Plans.

9 DEC 2021

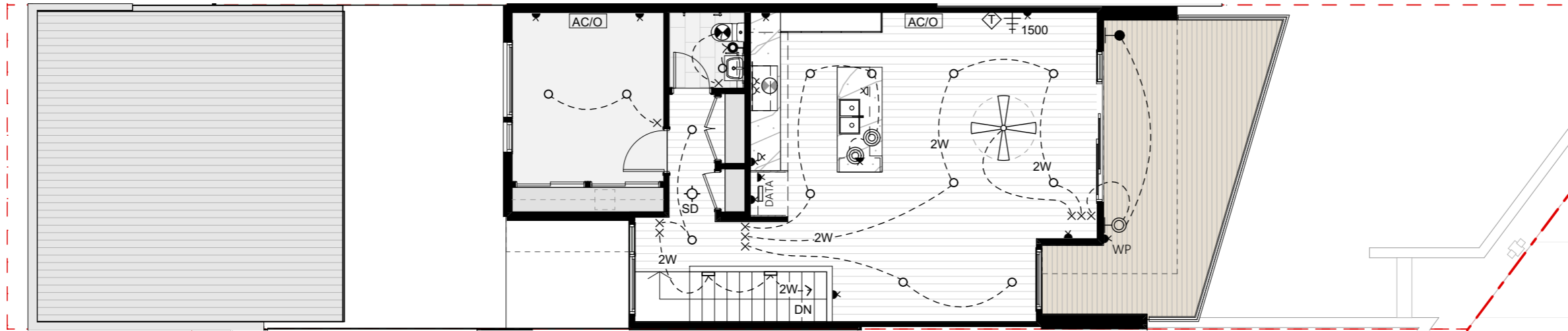


PLAN

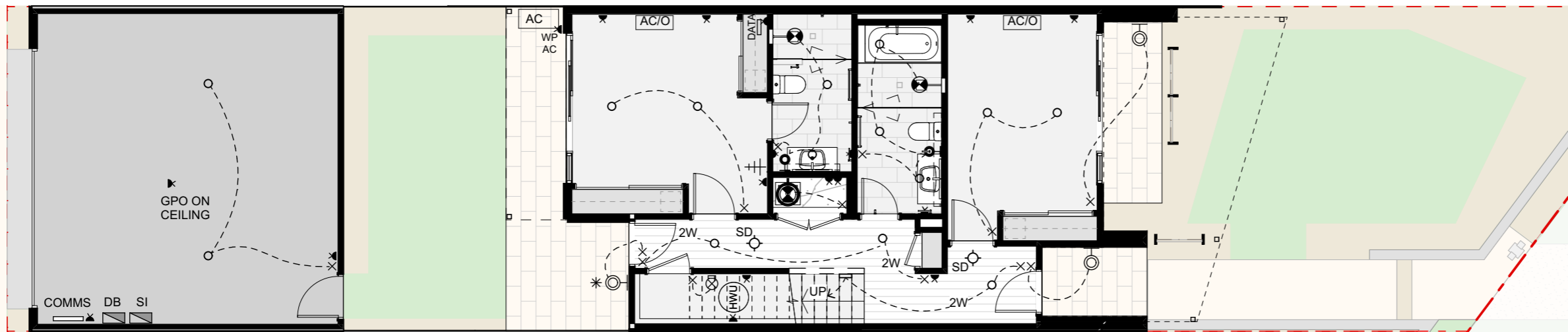
AUREUS

THE BRUNSWICK

FACADE 1



LEVEL 1



GROUND FLOOR

- DB DISTRIBUTION BOARD
- SI SOLAR INVERTER
- COMMS INTERNET SUPPLY POINT
[+ DEDICATED GPO]
- DATA MODEM/ROUTER POINT
[+ DEDICATED GPO]
- SD SMOKE DETECTOR
- SINGLE GPO 200mm ABOVE F.L.
UNLESS NOTED OTHERWISE.
- DOUBLE GPO 800mm ABOVE FFL FOR
ROOF DECK & BALCONY
- WP = W/PROOF15A = 15 AMP
- X SWITCH
- DX SWITCH WITH DIMMER
- 2 WAY SWITCH
- * MOTION / LIGHT SENSOR
- LT-01 L.E.D. DOWNLIGHT
E - FOR EXTERNAL SOFFITS
- ⊙ LT-02 PENDANT /STRIP LIGHT OVER
KITCHEN BENCH
- LT-03 KITCHEN L.E.D. STRIP
BELOW ISLAND BENCH
- ▭ LT-04 STAIR LIGHT
- ⊖ LT-05 WALL LIGHT - EXTERNAL
NOM. 2200 ABOVE F.L.
- LT-06 L.E.D. DOWNLIGHT FIRE RATED
FIRE RATED WITH FIRE COVER
- ⊗ LT-07 LIGHT IN CUPBOARD OR ROOF
- LT-08 ROOF DECK EXTERNAL L.E.D.
- ⊖ LT-09 WALL LIGHT - EXTERNAL
NOM. 2200 ABOVE F.L.
- ⊖ LT-10 WALL LIGHT - INTERNAL
NOM. 1950 ABOVE F.L.
- ⊗ CEILING EXHAUST FAN
- ⊗ CEILING EXHAUST FAN + DOWNLIGHT
- ⊗ RANGEHOOD EXHAUST
- ⊕ TELEVISION POINT* 200mm ABOVE F.L.
UNLESS NOTED OTHERWISE.
* OUTLET TO ALLOW FOR
TV ANTENNA AND CABLE TV
- ⊕ CAT 6 CABLE POINT * 200mm ABOVE F.L.
UNLESS NOTED OTHERWISE.
* OUTLET TO ALLOW FOR
TELEPHONE AND DATA
- AC AIR CON CONDENSOR UNIT
- AC/O AIR CON OUTLET
MOUNTED JUST BELOW CORNICE
- CENTRED ON WALL
- HWS HOT WATER SERVICE
- SL SKYLIGHT

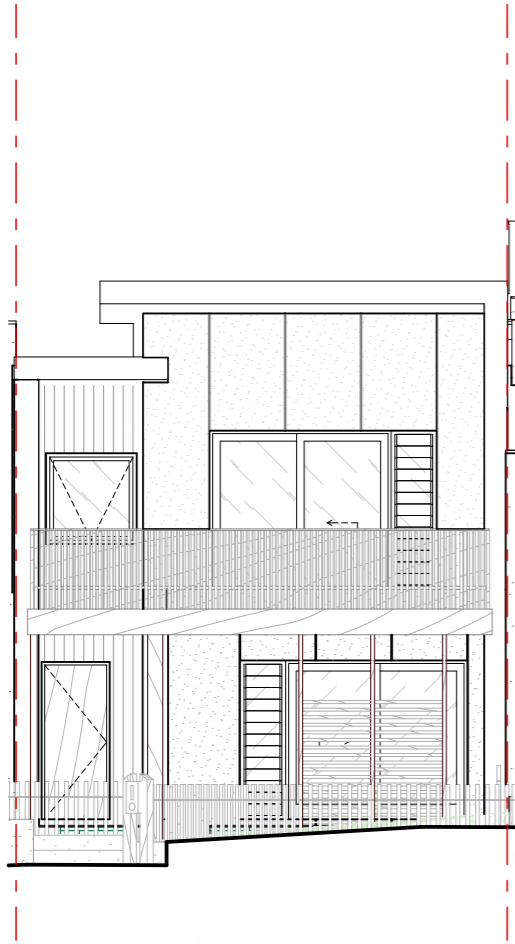
NOTE
FOR FURTHER DETAILS REGARDING
ELECTRICAL ITEMS - REFER TO
KITCHEN / BATHROOM / ENSUITE PLANS

ELECTRICAL

Disclaimer: The content contained in these architectural plans (Plans) remains at all times the intellectual property of Intrapac Property Pty Ltd (Company). The Plans are provided strictly on the basis of, and subject to, these terms. By taking a copy of the Plans, you acknowledge and represent to the Company that you have read, understood and accepted these terms and agree to keep the Plans confidential. The Plans are current as at the date of issue, and are approximate and for illustrative purposes only. Any furnishings illustrated are not included. To the extent permitted by law, no guarantees, warranties, or representations as to the accuracy and completeness of the Plans are made. The Company may substitute items with equivalent items, use substitute products or modify the Plans (including any specifications or dimensions represented on the Plans) due to building and design requirements, or otherwise, without notice. To the extent permitted by law, the Company and its directors, officers, employees, advisers and agents expressly disclaim all liability which may be based on any information, statement or opinion contained in or omitted from the Plans. You must not rely upon such information in any way. The Company accepts no liability for any action taken or not taken by any party in reliance on the Plans.

9 DEC 2021

Disclaimer: The content contained in these architectural plans (Plans) remains at all times the intellectual property of Intrapac Property Pty Ltd (Company). The Plans are provided strictly on the basis of, and subject to, these terms. By taking a copy of the Plans, you acknowledge and represent to the Company that you have read, understood and accepted these terms and agree to keep the Plans confidential. The Plans are current as at the date of issue, and are approximate and for illustrative purposes only. Any furnishings illustrated are not included. To the extent permitted by law, no guarantees, warranties, or representations as to the accuracy and completeness of the Plans are made. The Company may substitute terms with equivalent terms, use substitute products or modify the Plans (including any specifications or dimensions represented on the Plans) due to building and design requirements. To the extent permitted by law, the Company and its directors, officers, employees, advisers and agents expressly disclaim all liability which may be based on any information, statement or opinion contained in or omitted from the Plans. You must not rely upon such information in any way. The Company accepts no liability for any action taken or not taken by any party in reliance on the Plans.



AUREUS

THE BRUNSWICK

FACADE 1

3 BEDROOM
2 CAR SPACE



ELEVATIONS

9 DEC 2021

AUREUS

THE BRUNSWICK

FACADE 2

3 BEDROOM

2 CAR SPACE

NSA	
FIRST FLOOR	89
GROUND FLOOR	92
	<hr/>
	181 m ²

GFA	
FIRST FLOOR	70
GARAGE	40
GROUND FLOOR	65
	<hr/>
	175 m ²



LEVEL 1



GROUND FLOOR

Disclaimer: The content contained in these architectural plans (Plans) remains at all times the intellectual property of Intrapac Property Pty Ltd (Company). The Plans are provided strictly on the basis of, and subject to, these terms. By taking a copy of the Plans, you acknowledge and represent to the Company that you have read, understood and accepted these terms and agree to keep the Plans confidential. The Plans are current as at the date of issue, and are approximate and for illustrative purposes only. Any furnishings illustrated are not included. To the extent permitted by law, no guarantees, warranties, or representations as to the accuracy and completeness of the Plans are made. The Company may substitute terms with equivalent terms, use substitute products or modify the Plans (including any specifications or dimensions represented on the Plans) due to building and design changes, or for any other reason, without notice. To the extent permitted by law, the Company and its directors, officers, employees, advisers and agents expressly disclaim all liability which may be based on any information, statement or opinion contained in or omitted from the Plans. You must not rely upon such information in any way. The Company accepts no liability for any action taken or not taken by any party in reliance on the Plans.

9 DEC 2021



PLAN

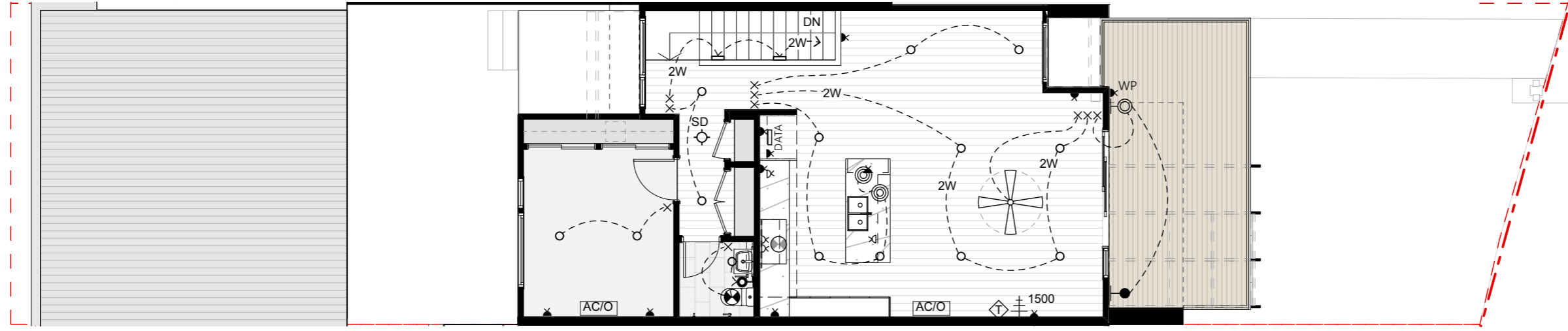
AUREUS

THE BRUNSWICK

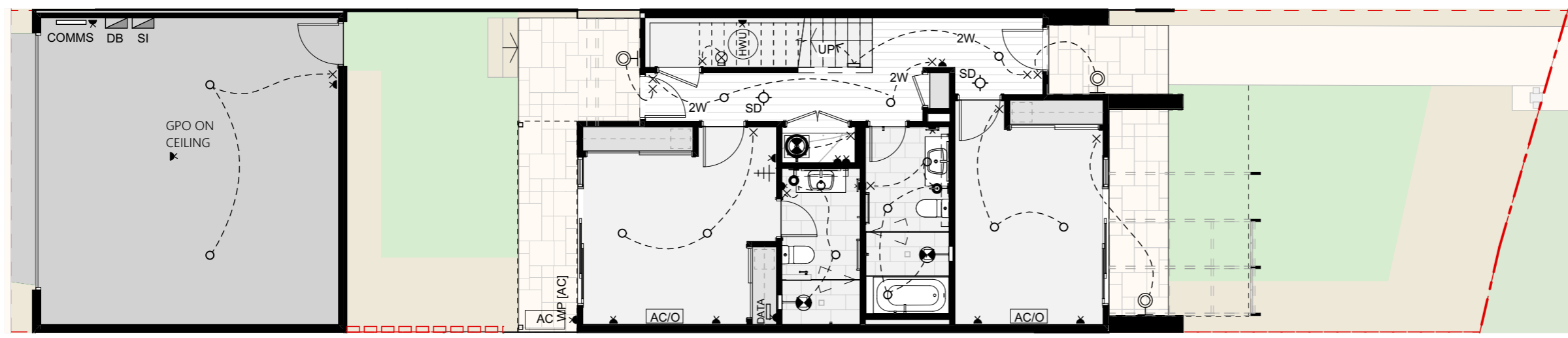
FACADE 2

- DB DISTRIBUTION BOARD
- SI SOLAR INVERTER
- COMMS INTERNET SUPPLY POINT
[+ DEDICATED GPO]
- DATA MODEM/ROUTER POINT
[+ DEDICATED GPO]
- SD SMOKE DETECTOR
- SINGLE GPO 200mm ABOVE F.L.
UNLESS NOTED OTHERWISE.
- DOUBLE GPO 800mm ABOVE FFL FOR
ROOF DECK & BALCONY
- WP = W/PROOF15A = 15 AMP
- X SWITCH
- DX SWITCH WITH DIMMER
- 2 WAY SWITCH
- * MOTION / LIGHT SENSOR
- LT-01 L.E.D. DOWNLIGHT
E - FOR EXTERNAL SOFFITS
- LT-02 PENDANT /STRIP LIGHT OVER
KITCHEN BENCH
- LT-03 KITCHEN L.E.D. STRIP
BELOW ISLAND BENCH
- LT-04 STAIR LIGHT
- LT-05 WALL LIGHT - EXTERNAL
NOM. 2200 ABOVE F.L.
- LT-06 L.E.D. DOWNLIGHT FIRE RATED
FIRE RATED WITH FIRE COVER
- LT-07 LIGHT IN CUPBOARD OR ROOF
- LT-08 ROOF DECK EXTERNAL L.E.D.
- LT-09 WALL LIGHT - EXTERNAL
NOM. 2200 ABOVE F.L.
- LT-10 WALL LIGHT - INTERNAL
NOM. 1950 ABOVE F.L.
- CEILING EXHAUST FAN
- CEILING EXHAUST FAN + DOWNLIGHT
- RANGEHOOD EXHAUST
- TELEVISION
POINT* 200mm ABOVE F.L.
UNLESS NOTED OTHERWISE.
* OUTLET TO ALLOW FOR
TV ANTENNA AND CABLE TV
- CAT 6
CABLE
POINT * 200mm ABOVE F.L.
UNLESS NOTED OTHERWISE.
* OUTLET TO ALLOW FOR
TELEPHONE AND DATA
- AC AIR CON CONDENSOR UNIT
- AC/O AIR CON OUTLET
MOUNTED JUST BELOW CORNICE
- CENTRED ON WALL
- HWS HOT WATER SERVICE
- SL SKYLIGHT

NOTE
FOR FURTHER DETAILS REGARDING
ELECTRICAL ITEMS - REFER TO
KITCHEN / BATHROOM / ENSUITE PLANS



LEVEL 1



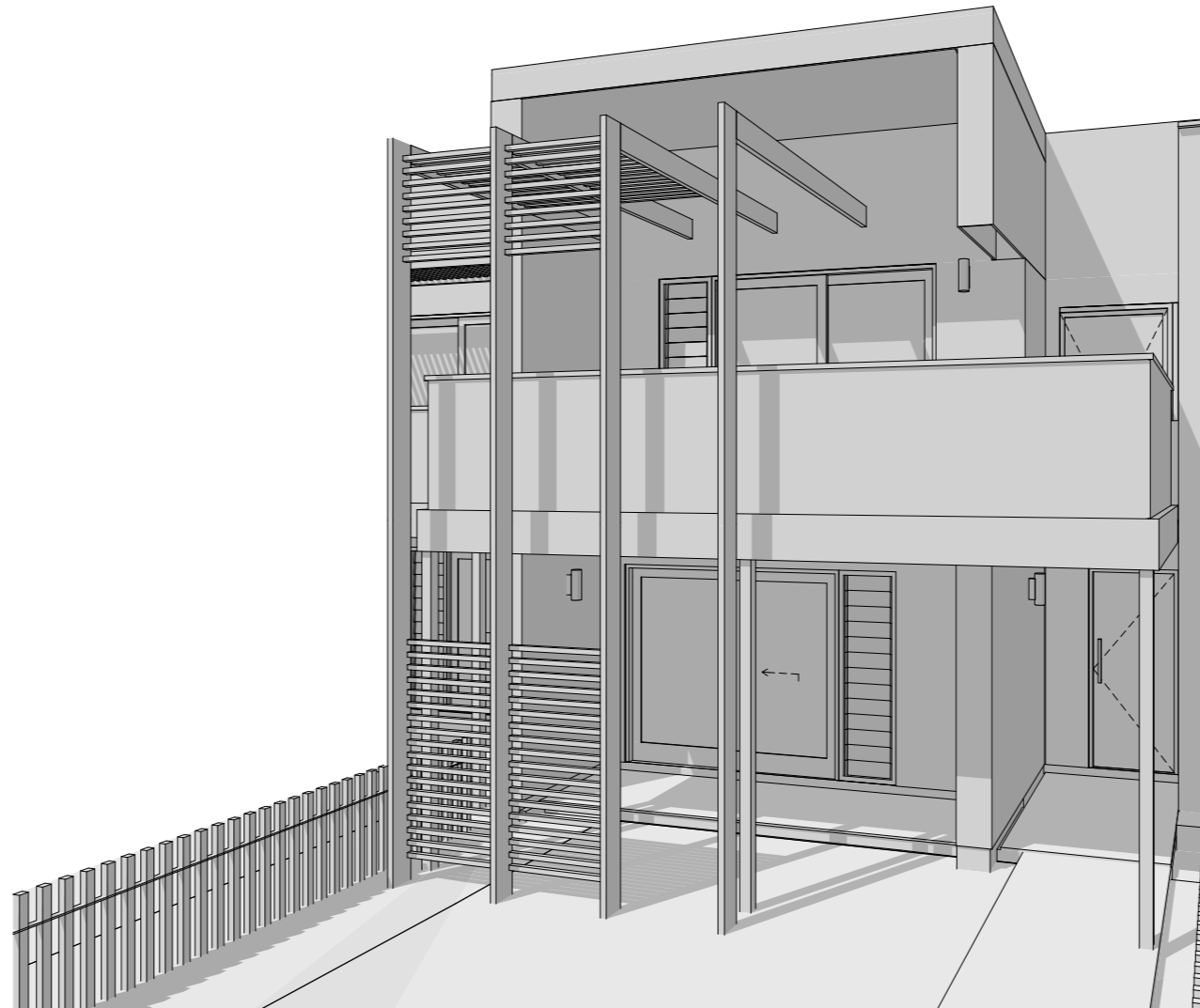
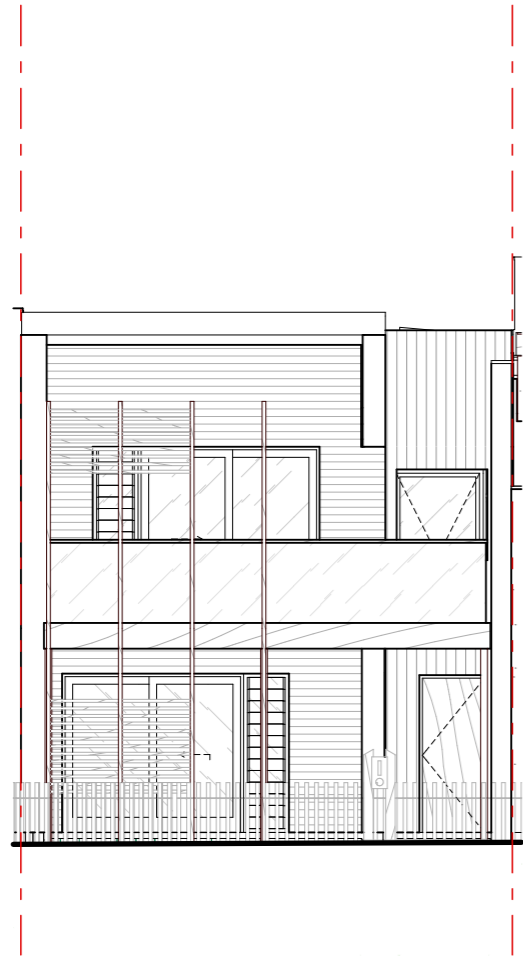
GROUND FLOOR

Disclaimer: The content contained in these architectural plans (Plans) remains at all times the intellectual property of Intrapac Property Pty Ltd (Company). The Plans are provided strictly on the basis of, and subject to, these terms. By taking a copy of the Plans, you acknowledge and represent to the Company that you have read, understood and accepted these terms and agree to keep the Plans confidential. The Plans are current as at the date of issue, and are approximate and for illustrative purposes only. Any furnishings illustrated are not included. To the extent permitted by law, no guarantees, warranties, or representations as to the accuracy and completeness of the Plans are made. The Company may substitute items with equivalent items, use substitute products or modify the Plans (including any specifications or dimensions represented on the Plans) due to building and design requirements. To the extent permitted by law, the Company and its directors, officers, employees, advisers and agents expressly disclaim all liability which may be based on any information, statement or opinion contained in or omitted from the Plans. You must not rely upon such information in any way. The Company accepts no liability for any action taken or not taken by any party in reliance on the Plans.

9 DEC 2021

ELECTRICAL

Disclaimer: The content contained in these architectural plans (Plans) remains at all times the intellectual property of Intrapac Property Pty Ltd (Company). The Plans are provided strictly on the basis of, and subject to, these terms. By taking a copy of the Plans, you acknowledge and represent to the Company that you have read, understood and accepted these terms and agree to keep the Plans confidential. The Plans are current as at the date of issue, and are approximate and for illustrative purposes only. Any furnishings illustrated are not included. To the extent permitted by law, no guarantees, warranties, or representations as to the accuracy and completeness of the Plans are made. The Company may substitute terms with equivalent terms, use substitute products or modify the Plans (including any specifications or dimensions represented on the Plans) due to building and design requirements. To the extent permitted by law, the Company and its directors, officers, employees, advisers and agents expressly disclaim all liability which may be based on any information, statement or opinion contained in or omitted from the Plans. You must not rely upon such information in any way. The Company accepts no liability for any action taken or not taken by any party in reliance on the Plans.



AUREUS

THE BRUNSWICK

FACADE 2

3 BEDROOM
2 CAR SPACE



9 DEC 2021

ELEVATIONS

Disclaimer: The content contained in these architectural plans (Plans) remains at all times the intellectual property of Intrapac Property Pty Ltd (Company). The Plans are provided strictly on the basis of, and subject to, these terms. By taking a copy of the Plans, you acknowledge and represent to the Company that you have read, understood and accepted these terms and agree to keep the Plans confidential. The Plans are current as at the date of issue, and are approximate and for illustrative purposes only. Any furnishings illustrated are not included. To the extent permitted by law, no guarantees, warranties, or representations as to the accuracy and completeness of the Plans are made. The Company may substitute terms with equivalent terms, use substitute products or modify the Plans (including any specifications or dimensions represented on the Plans) due to building and design requirements. To the extent permitted by law, the Company and its directors, officers, employees, advisers and agents expressly disclaim all liability which may be based on any information, statement or opinion contained in or omitted from the Plans. You must not rely upon such information in any way. The Company accepts no liability for any action taken or not taken by any party in reliance on the Plans.

AUREUS

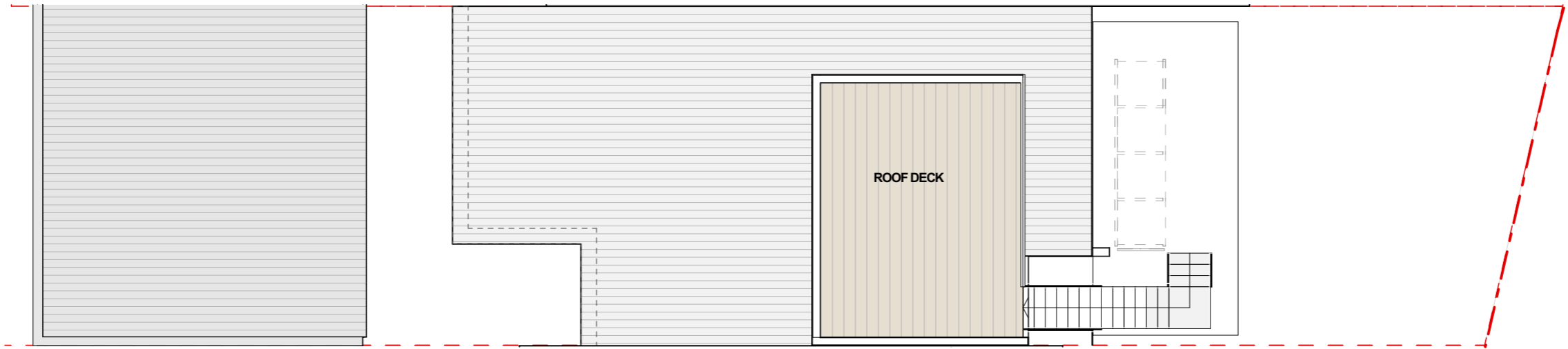
THE BRUNSWICK

FACADE 3

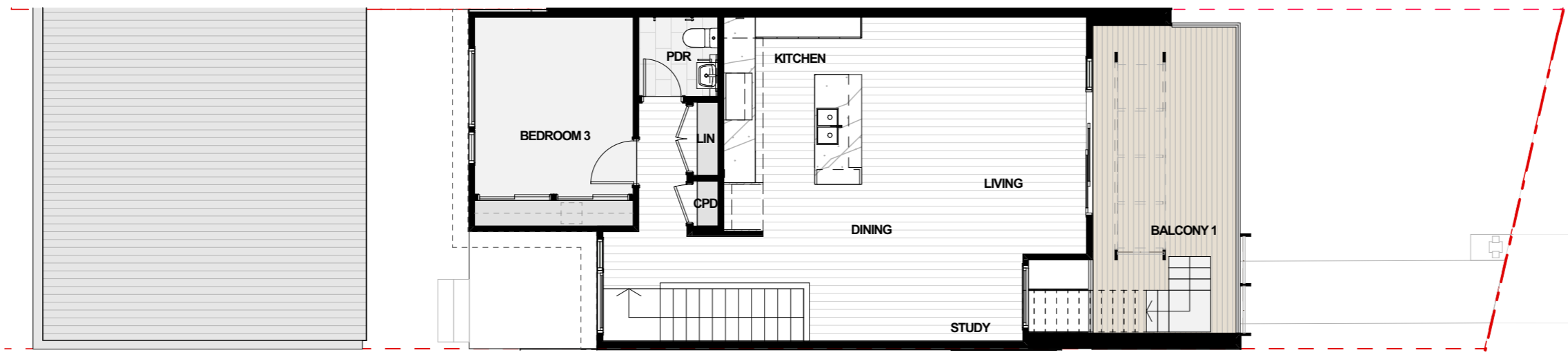
3 BEDROOM
2 CAR SPACE

NSA	
FIRST FLOOR	70
GROUND FLOOR	65
<hr/>	
	135 m ²

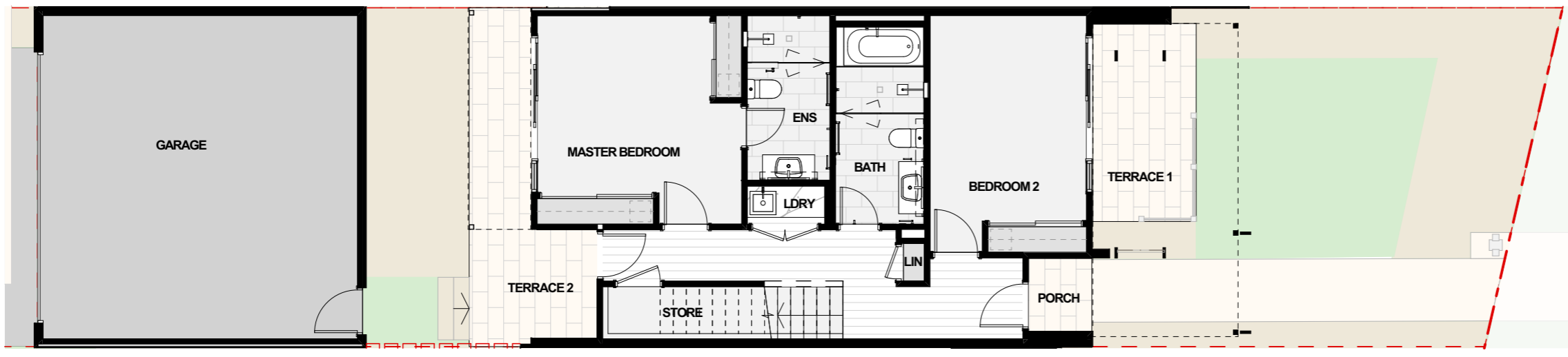
GFA	
BALCONY	18
FIRST FLOOR	70
GARAGE	40
GROUND FLOOR	65
PORCH	2
ROOF DECK	20
TERRACE 1	8
TERRACE 2	10
<hr/>	
	233 m ²



ROOF DECK



LEVEL 1



GROUND FLOOR

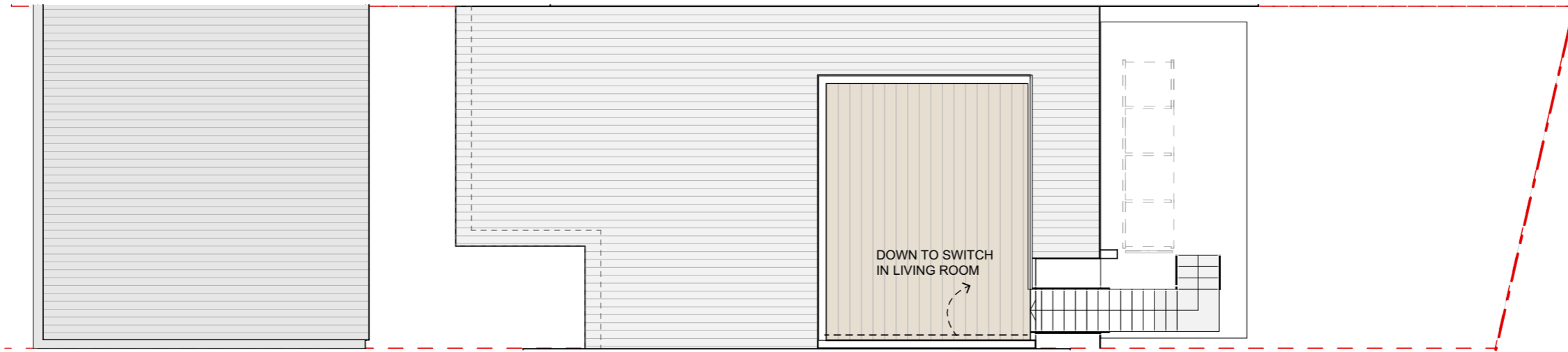


9 DEC 2021

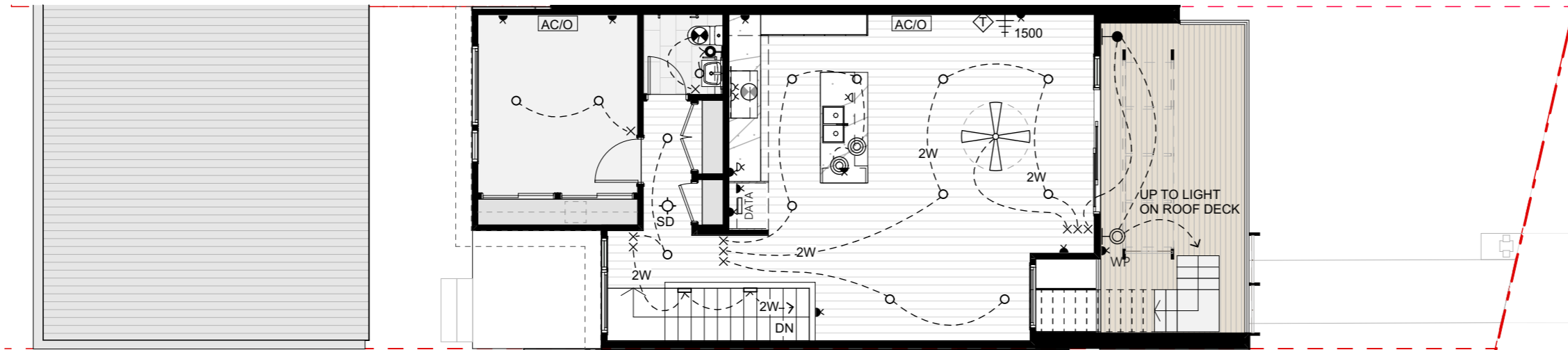
PLAN

FACADE 3

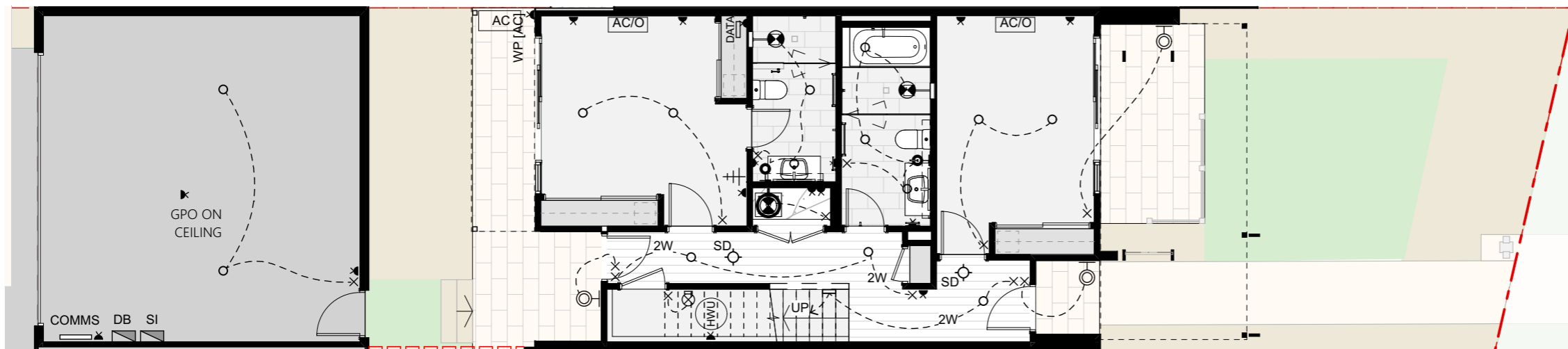
ROOF DECK



LEVEL 1



GROUND FLOOR



- DB DISTRIBUTION BOARD
 - SI SOLAR INVERTER
 - COMMS INTERNET SUPPLY POINT
[+ DEDICATED GPO]
 - DATA MODEM/ROUTER POINT
[+ DEDICATED GPO]
 - SD SMOKE DETECTOR
 - SINGLE GPO 200mm ABOVE F.L.
UNLESS NOTED OTHERWISE.
 - DOUBLE GPO 800mm ABOVE FFL FOR
ROOF DECK & BALCONY
- WP = W/PROOF15A = 15 AMP
- X SWITCH
 - DX SWITCH WITH DIMMER
 - 2W 2 WAY SWITCH
 - * MOTION / LIGHT SENSOR
- LT-01 L.E.D. DOWNLIGHT
E - FOR EXTERNAL SOFFITS
 - LT-02 PENDANT /STRIP LIGHT OVER
KITCHEN BENCH
 - LT-03 KITCHEN L.E.D. STRIP
BELOW ISLAND BENCH
 - LT-04 STAIR LIGHT
 - LT-05 WALL LIGHT - EXTERNAL
NOM. 2200 ABOVE F.L.
 - LT-06 L.E.D. DOWNLIGHT FIRE RATED
FIRE RATED WITH FIRE COVER
 - LT-07 LIGHT IN CUPBOARD OR ROOF
 - LT-08 ROOF DECK EXTERNAL L.E.D.
 - LT-09 WALL LIGHT - EXTERNAL
NOM. 2200 ABOVE F.L.
 - LT-10 WALL LIGHT - INTERNAL
NOM. 1950 ABOVE F.L.
 - CEILING EXHAUST FAN
 - CEILING EXHAUST FAN + DOWNLIGHT
 - RANGEHOOD EXHAUST
 - TELEVISION POINT* 200mm ABOVE F.L.
UNLESS NOTED OTHERWISE.
* OUTLET TO ALLOW FOR
TV ANTENNA AND CABLE TV
 - CAT 6 CABLE POINT * 200mm ABOVE F.L.
UNLESS NOTED OTHERWISE.
* OUTLET TO ALLOW FOR
TELEPHONE AND DATA
 - AC AIR CON CONDENSOR UNIT
 - AC/O AIR CON OUTLET
MOUNTED JUST BELOW CORNICE
- CENTRED ON WALL
 - HWS HOT WATER SERVICE
 - SL SKYLIGHT

NOTE
FOR FURTHER DETAILS REGARDING
ELECTRICAL ITEMS - REFER TO
KITCHEN / BATHROOM / ENSUITE PLANS

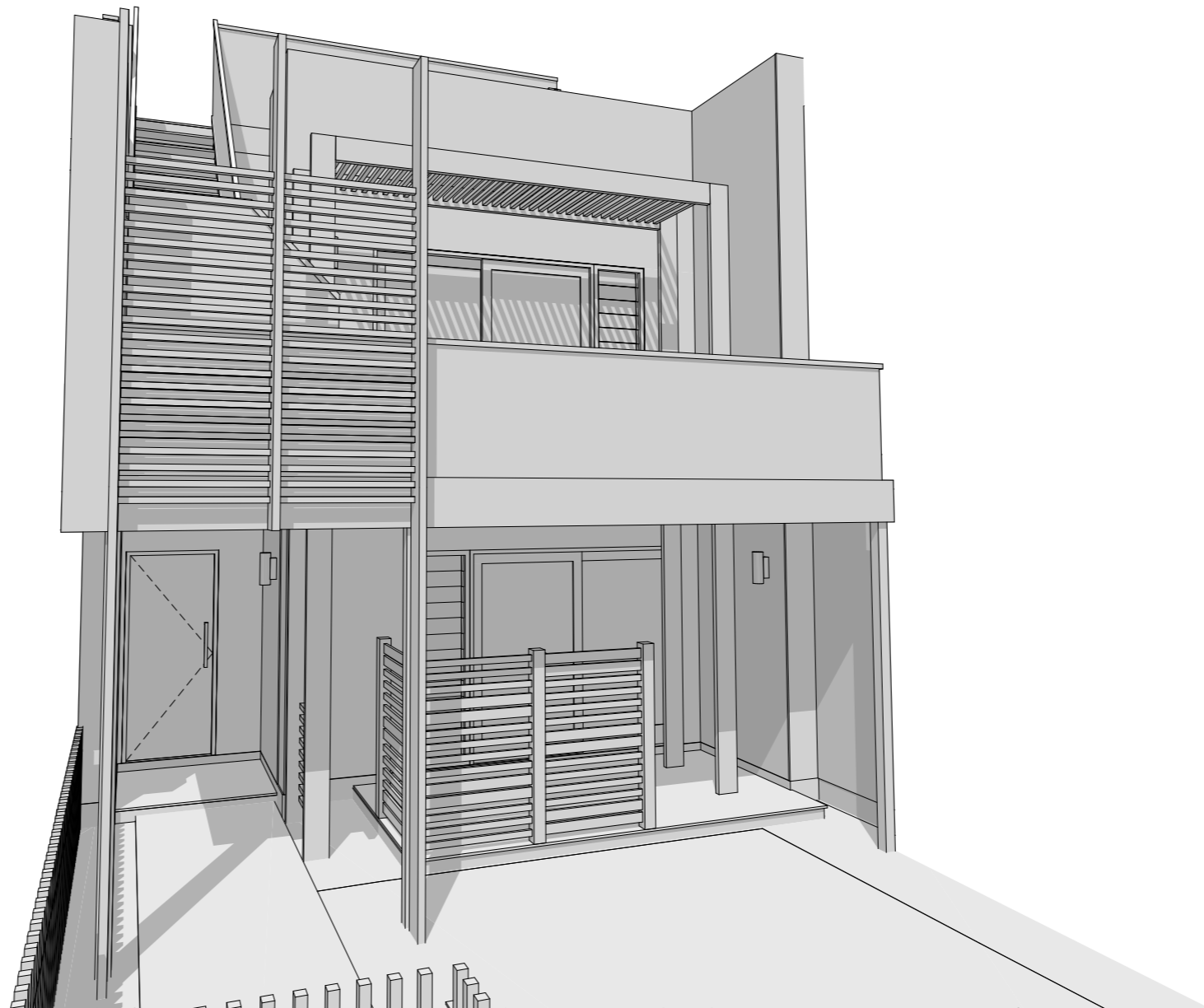
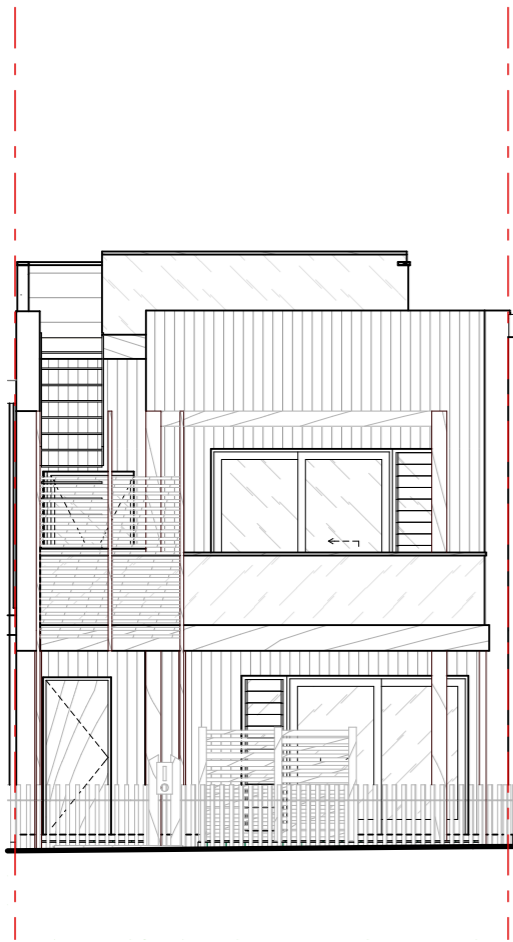


ELECTRICAL

Disclaimer: The content contained in these architectural plans (Plans) remains at all times the intellectual property of Intrapac Property Pty Ltd (Company). The Plans are provided strictly on the basis of, and subject to, these terms. By taking a copy of the Plans, you acknowledge and represent to the Company that you have read, understood and accepted these terms and agree to keep the Plans confidential. The Plans are current as at the date of issue, and are approximate and for illustrative purposes only. Any furnishings illustrated are not included. To the extent permitted by law, no guarantees, warranties, or representations as to the accuracy and completeness of the Plans are made. The Company may substitute items with equivalent items, use substitute products or modify the Plans (including any specifications or dimensions represented on the Plans) due to building and design requirements or other factors. To the extent permitted by law, the Company and its directors, officers, employees, advisers and agents expressly disclaim all liability which may be based on any information, statement or opinion contained in or omitted from the Plans. You must not rely upon such information in any way. The Company accepts no liability for any action taken or not taken by any party in reliance on the Plans.

9 DEC 2021

Disclaimer: The content contained in these architectural plans (Plans) remains at all times the intellectual property of Intrapac Property Pty Ltd (Company). The Plans are provided strictly on the basis of, and subject to, these terms. By taking a copy of the Plans, you acknowledge and represent to the Company that you have read, understood and accepted these terms and agree to keep the Plans confidential. The Plans are current as at the date of issue, and are approximate and for illustrative purposes only. Any furnishings illustrated are not included. To the extent permitted by law, no guarantees, warranties, or representations as to the accuracy and completeness of the Plans are made. The Company may substitute terms with equivalent terms, use substitute products or modify the Plans (including any specifications or dimensions represented on the Plans) due to building and design requirements. To the extent permitted by law, the Company and its directors, officers, employees, advisers and agents expressly disclaim all liability which may be based on any information, statement or opinion contained in or omitted from the Plans. You must not rely upon such information in any way. The Company accepts no liability for any action taken or not taken by any party in reliance on the Plans.



AUREUS

THE BRUNSWICK

FACADE 3

3 BEDROOM
2 CAR SPACE

AVANT
TOWNHOMES

INTRAPAC
PROPERTY

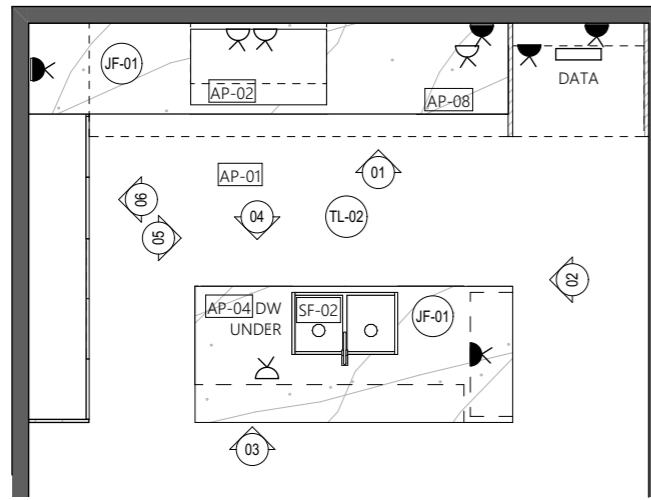


arcadia

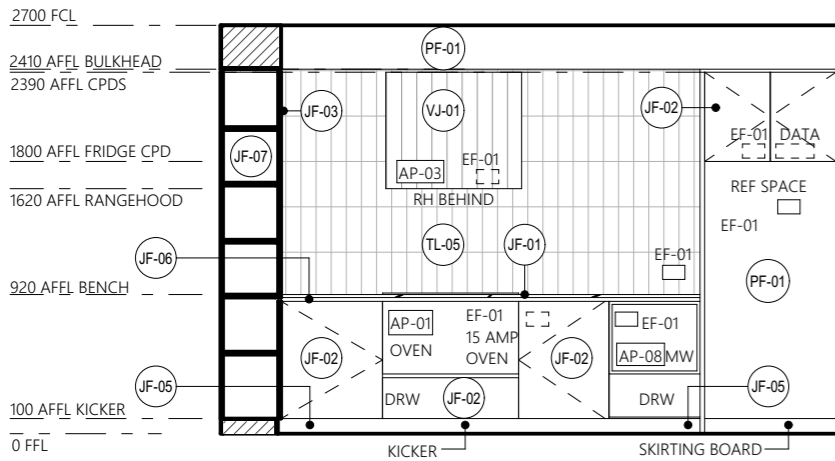
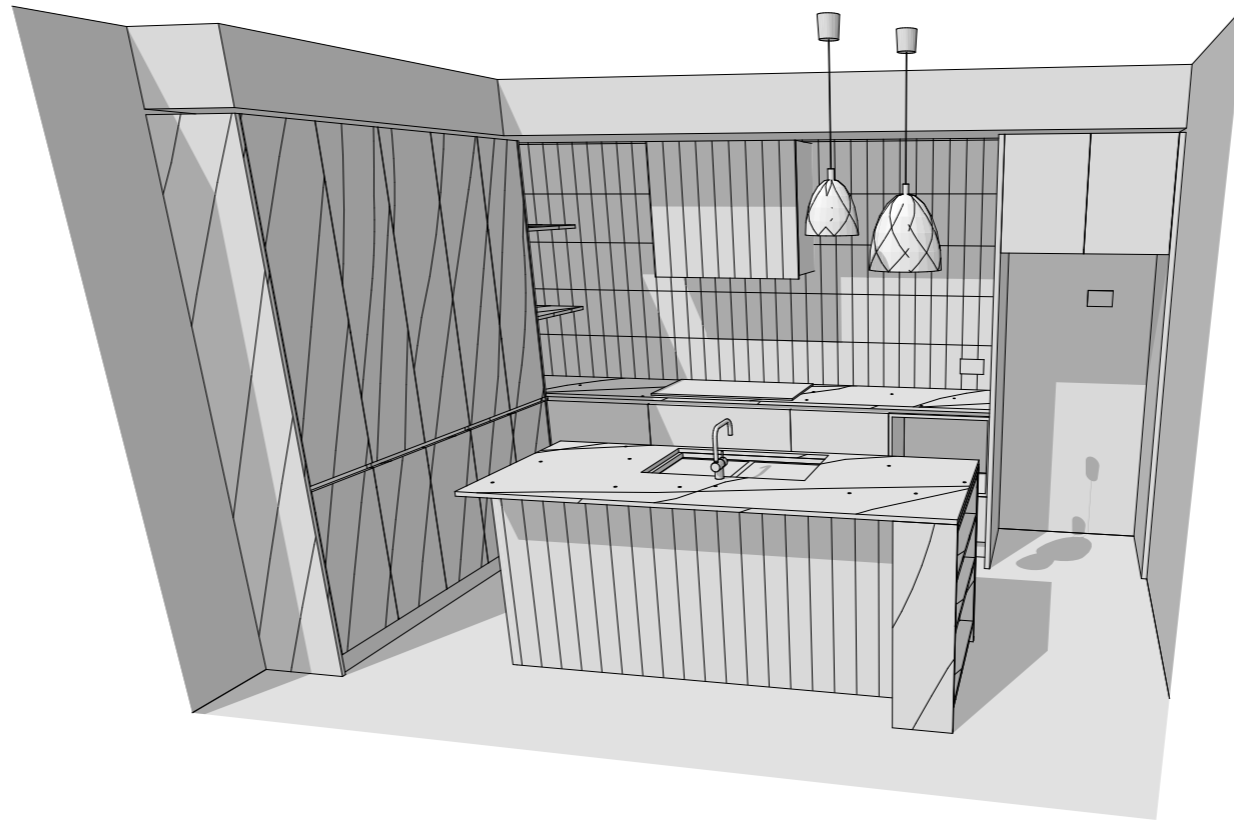
ELEVATIONS

9 DEC 2021

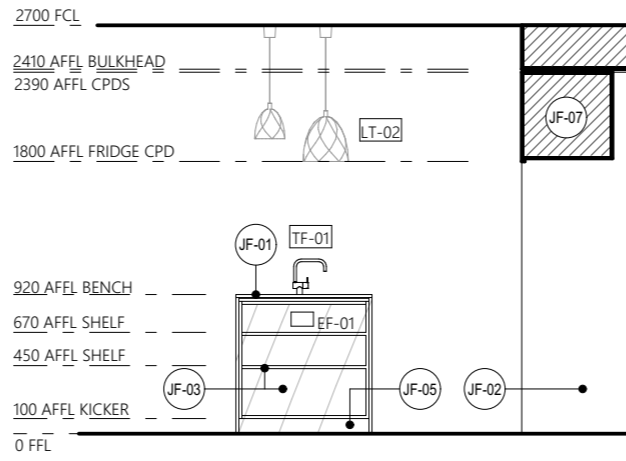
Disclaimer: The content contained in these architectural plans (Plans) remains at all times the intellectual property of Intrapac Property Pty Ltd (Company). The Plans are provided strictly on the basis of, and subject to, these terms. By taking a copy of the Plans, you acknowledge and represent to the Company that you have read, understood and accepted these terms and agree to keep the Plans confidential. The Plans are current as at the date of issue, and are approximate and for illustrative purposes only. Any furnishings illustrated are not included. To the extent permitted by law, no guarantees, warranties, or representations as to the accuracy and completeness of the Plans are made. The Company may substitute items with equivalent items, use substitute products or modify the Plans (including any specifications or dimensions represented on the Plans) due to building and design requirements. To the extent permitted by law, the Company and its directors, officers, employees, advisers and agents expressly disclaim all liability which may be based on any information, statement or opinion contained in or omitted from the Plans. You must not rely upon such information in any way. The Company accepts no liability for any action taken or not taken by any party in reliance on the Plans.



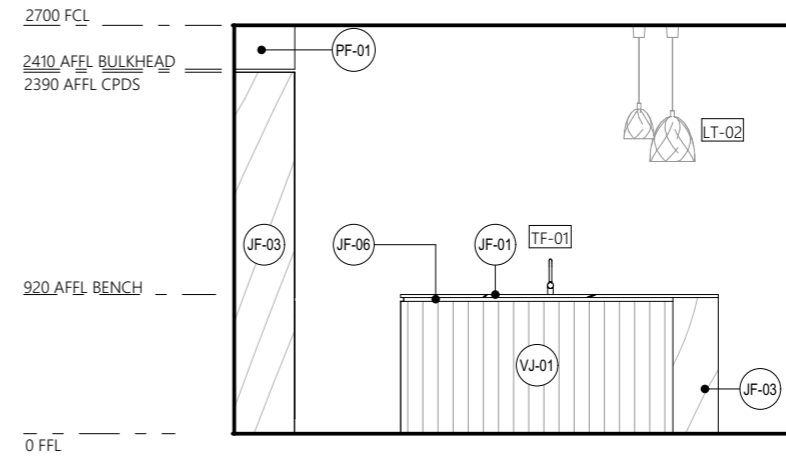
KITCHEN 1:50



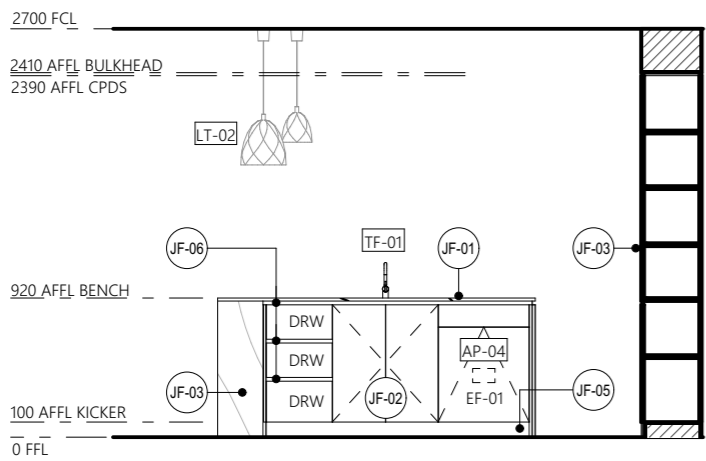
ELEVATION 01



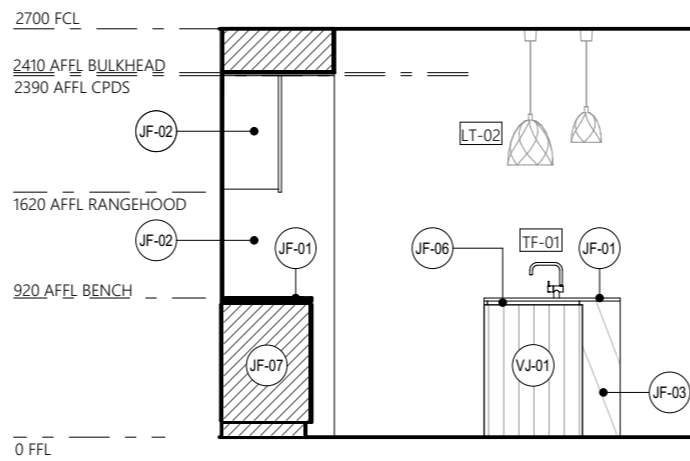
ELEVATION 02



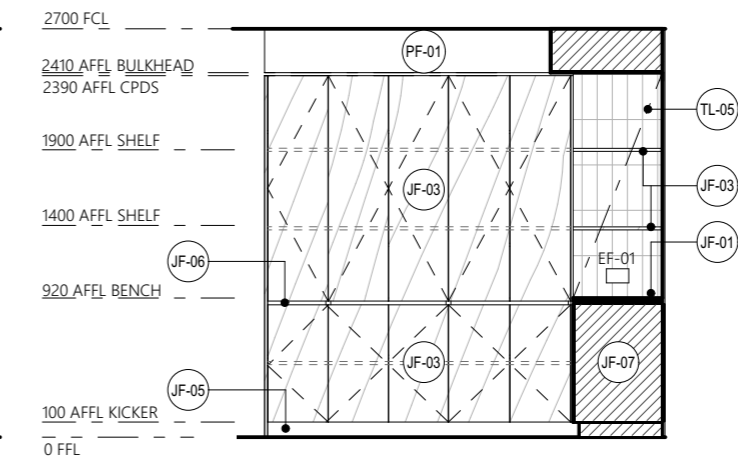
ELEVATION 03



ELEVATION 04

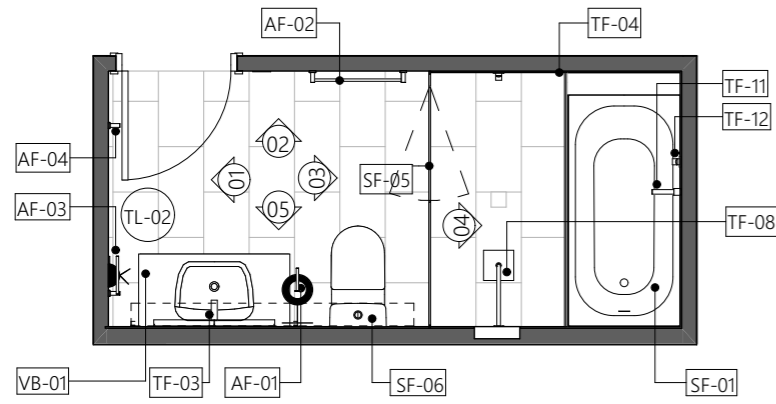


ELEVATION 05



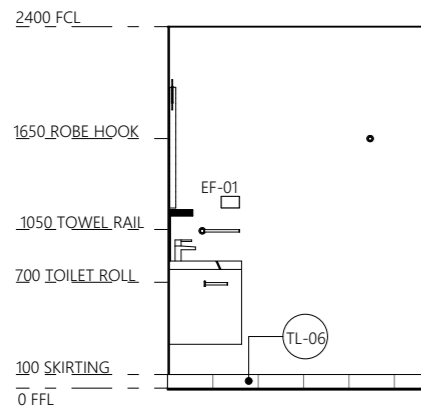
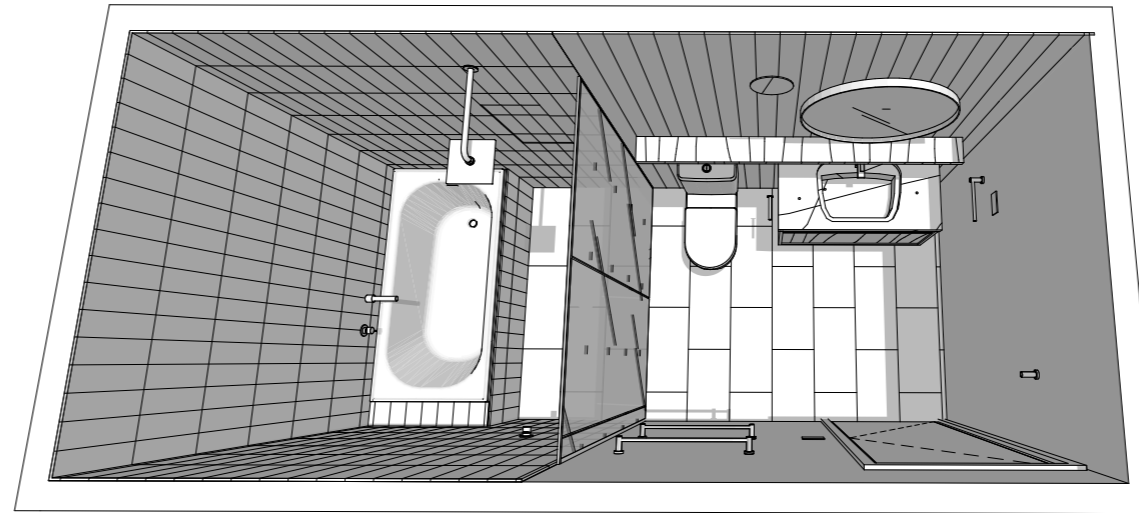
ELEVATION 06

Disclaimer: The content contained in these architectural plans (Plans) remains at all times the intellectual property of Intrapac Property Pty Ltd (Company). The Plans are provided strictly on the basis of, and subject to, these terms. By taking a copy of the Plans, you acknowledge and represent to the Company that you have read, understood and accepted these terms and agree to keep the Plans confidential. The Plans are current as at the date of issue, and are approximate and for illustrative purposes only. Any furnishings illustrated are not included. To the extent permitted by law, no guarantees, warranties, or representations as to the accuracy and completeness of the Plans are made. The Company may substitute items with equivalent items, use substitute products or modify the Plans (including any specifications or dimensions represented on the Plans) due to building and design requirements. To the extent permitted by law, the Company and its directors, officers, employees, advisers and agents expressly disclaim all liability which may be based on any information, statement or opinion contained in or omitted from the Plans. You must not rely upon such information in any way. The Company accepts no liability for any action taken or not taken by any party in reliance on the Plans.

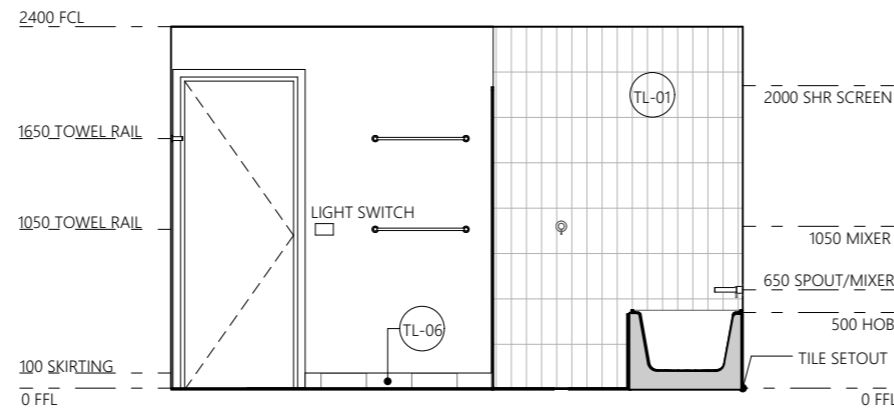


BATHROOM

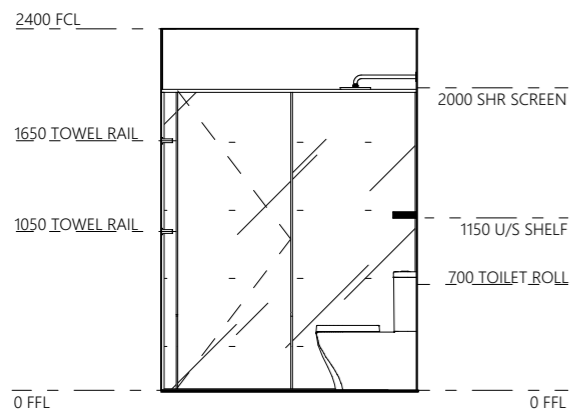
1:50



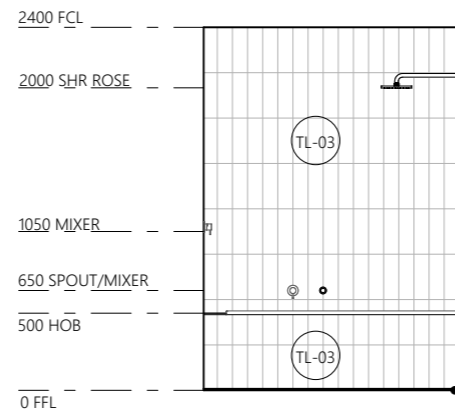
ELEVATION 01



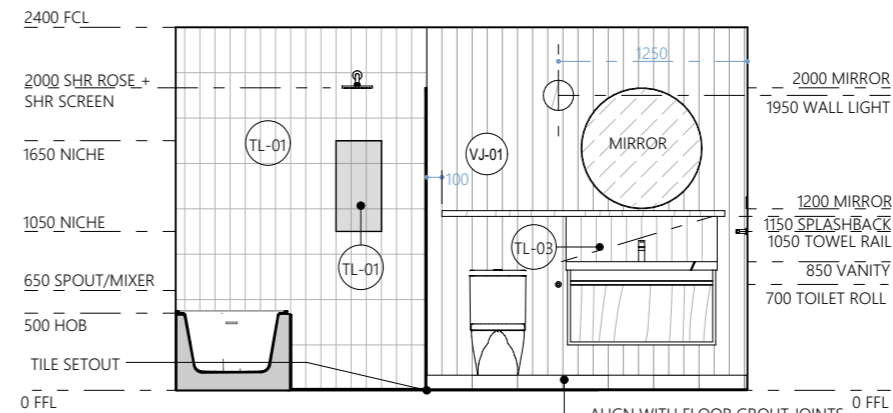
ELEVATION 02



ELEVATION 03



ELEVATION 04



ELEVATION 05

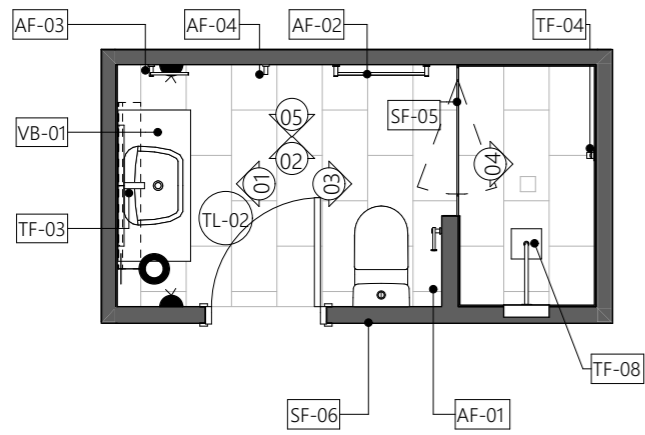
AUREUS
THE BRUNSWICK



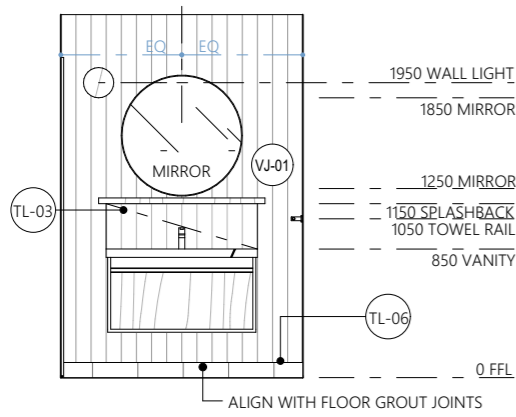
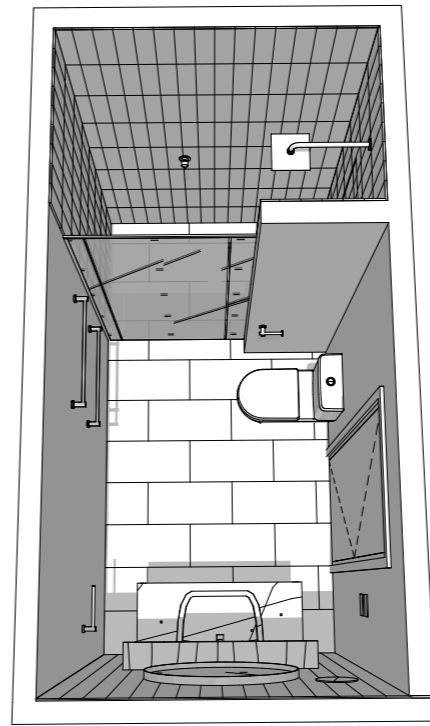
9 DEC 2021

BATH B12

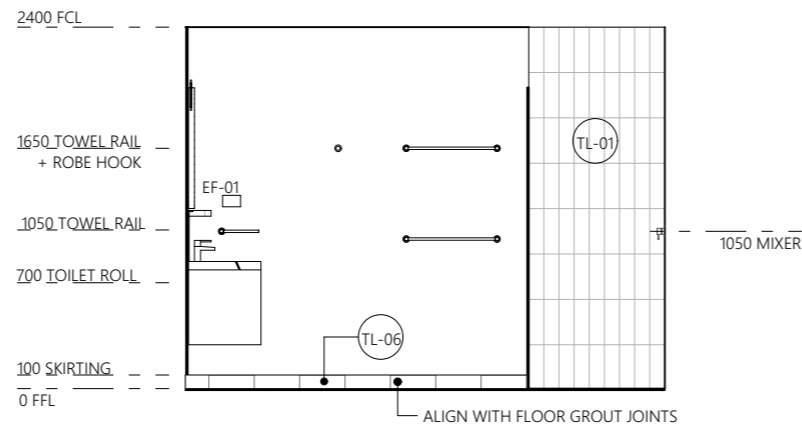
Disclaimer: The content contained in these architectural plans (Plans) remains at all times the intellectual property of Intrapac Property Pty Ltd (Company). The Plans are provided strictly on the basis of, and subject to, these terms. By taking a copy of the Plans, you acknowledge and represent to the Company that you have read, understood and accepted these terms and agree to keep the Plans confidential. The Plans are current as at the date of issue, and are approximate and for illustrative purposes only. Any furnishings illustrated are not included. To the extent permitted by law, no guarantees, warranties, or representations as to the accuracy and completeness of the Plans are made. The Company may substitute items with equivalent terms, use substitute products or modify the Plans (including any specifications or dimensions represented on the Plans) due to building and design requirements. To the extent permitted by law, the Company and its directors, officers, employees, advisers and agents expressly disclaim all liability which may be based on any information, statement or opinion contained in or omitted from the Plans. You must not rely upon such information in any way. The Company accepts no liability for any action taken or not taken by any party in reliance on the Plans.



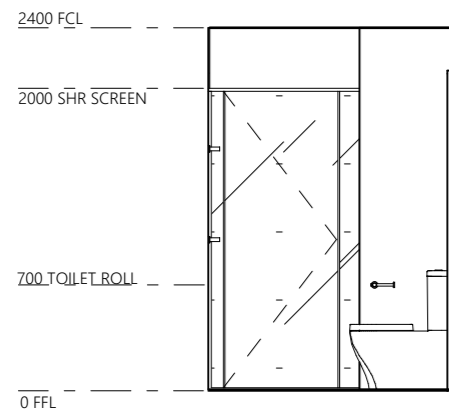
ENSUITE



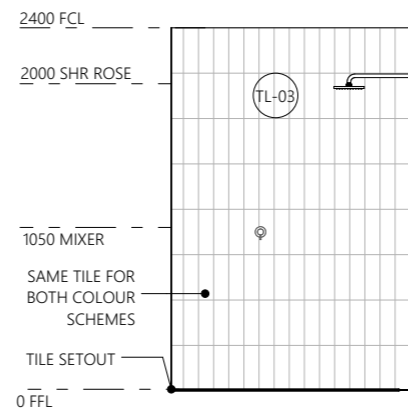
ELEVATION 01



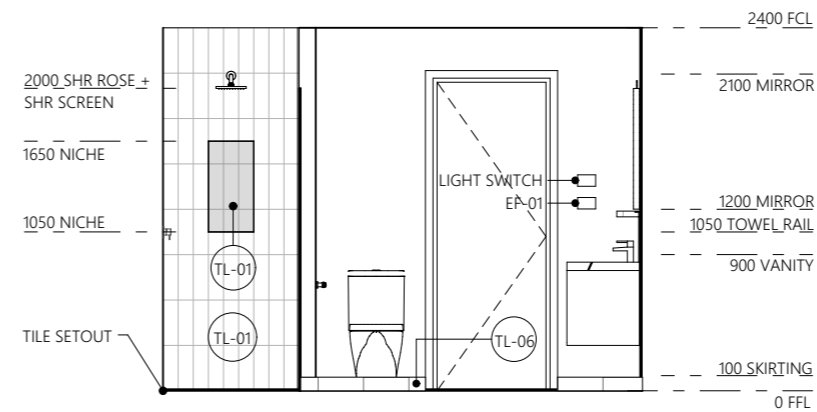
ELEVATION 02



ELEVATION 03

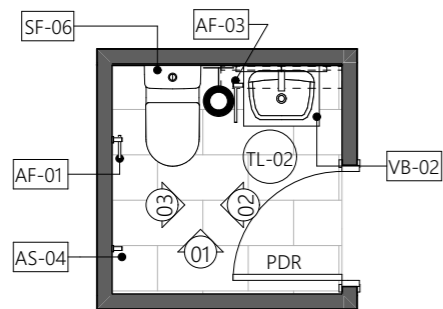


ELEVATION 04



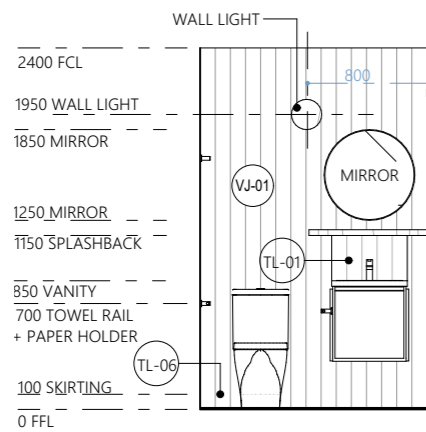
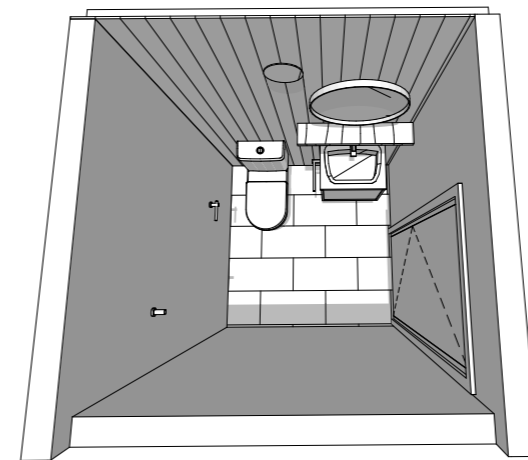
ELEVATION 05

Disclaimer: The content contained in these architectural plans (Plans) remains at all times the intellectual property of Intrapac Property Pty Ltd (Company). The Plans are provided strictly on the basis of, and subject to, these terms. By taking a copy of the Plans, you acknowledge and represent to the Company that you have read, understood and accepted these terms and agree to keep the Plans confidential. The Plans are current as at the date of issue, and are approximate and for illustrative purposes only. Any furnishings illustrated are not included. To the extent permitted by law, no warranties, or representations as to the accuracy and completeness of the Plans are made. The Company may substitute items with equivalent items, use substitute products or modify the Plans (including any specifications or dimensions represented on the Plans) due to building and design requirements. To the extent permitted by law, the Company and its directors, officers, employees, advisers and agents expressly disclaim all liability which may be based on any information, statement or opinion contained in or omitted from the Plans. You must not rely upon such information in any way. The Company accepts no liability for any action taken or not taken by any party in reliance on the Plans.

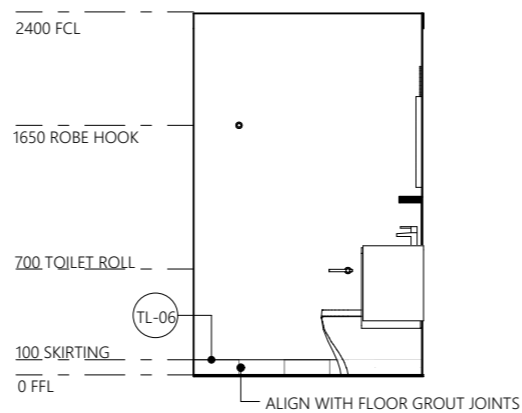


POWDER

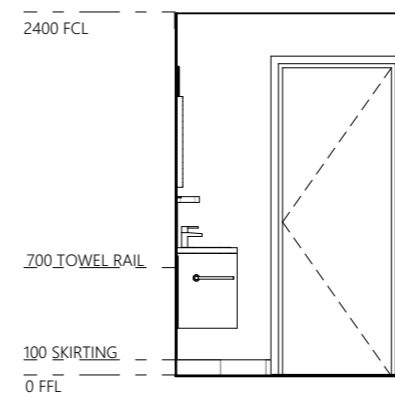
1:50



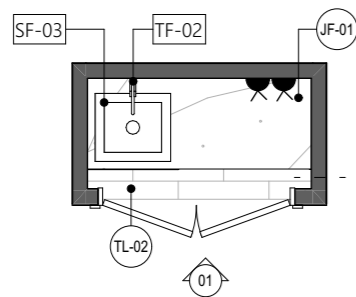
ELEVATION 01



ELEVATION 02

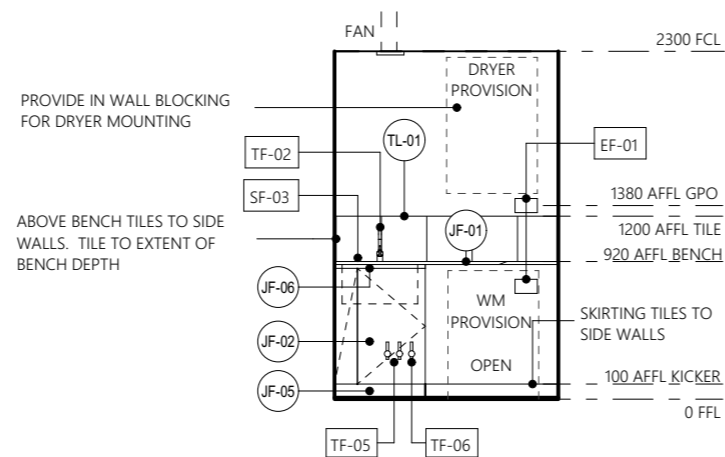


ELEVATION 03



LAUNDRY

1:50



ELEVATION 01